

ON-SITE RECYCLED WATER NOTES FOR RESIDENTIAL SITES

1. The installation of the recycled water system shall be accomplished under the approval, inspection, and to the satisfaction of the El Dorado Irrigation District (EID).
2. EID will inspect the construction of residential dual plumbed irrigation installations prior to backfilling. The District shall be notified two (2) working days in advance of the desired inspection date by the owner or owner's representative at (530) 295-6873. In no case shall irrigation lines be backfilled before inspection by the District.
3. The homeowner shall be responsible for providing access to and cooperation with the District Inspector to perform all testing and inspections.
4. There shall be no direct connections between the potable and recycled water systems.
5. Recycled water shall not be used for any purpose other than landscape irrigation.
6. Hose bibs are prohibited on the recycled water system.
7. Water used in hose bibs shall be potable water and hose bibs shall be attached to the house.
8. The potable water system shall be protected by an approved backflow prevention assembly. No backflow prevention assembly is required on the recycled water service.
9. All potable water lines, including fill lines for water features, shall be connected to the potable water system using copper pipe.
10. A minimum of ten (10) feet horizontal separation must be maintained at all times between the constant pressure recycled and potable water lines. A minimum of one (1) foot vertical separation must be maintained at all times between the recycling and potable water lines with the recycled waterline below the potable.
11. Blue warning tape shall be placed over pipe in the trench of all pipe carrying potable water.
12. Purple warning tape shall be placed over pipe in the trench of all pipe carrying recycled water.
13. Recycled water piping shall be purple and identified as recycled water pipes by continuous marking on both sides. The markings shall include the following: "WARNING RECYCLED WATER - DO NOT DRINK", nominal pipe size, pressure rating, and ASTM designations.
14. All recycled water sprinkler control valves, isolation valves, regulators, and other devices shall be tagged. Identification shall be weatherproof purple plastic, 3-inches by 4-inches with the words "WARNING RECYCLING WATER - DO NOT DRINK". Imprinting shall be permanent and black in color. Use tags manufactured by T. Christy Enterprises or approved equal.
15. All spray heads shall be identified with weatherproof purple plastic rings or equivalent identification and adjusted to minimize overspray onto adjacent hardscapes.
16. After installation of the recycled and potable water service, a cross connection test and inspection of the irrigation system will be performed.
17. The Homeowner or contractor shall arrange with EID for a final irrigation system inspection. EID shall be notified two (2) working days in advance of the desired inspection date at (530) 295-6873. Modifications to the irrigation system may be required.
18. Failure to comply with any of the EID's Standards and Regulations may result in termination of recycled and/or potable water service.

<i>EL DORADO IRRIGATION DISTRICT</i>				
<i>ON-SITE RECYCLED WATER NOTES FOR RESIDENTIAL SITES</i>				
DRAWN BY A.URTEAGA	SCALE NONE	REVISION	DATE	BY
APPROVED B. MUELLER	DATE 09/09			
				EID STANDARD DRAWING NO. <i>OSR1</i>

ON-SITE RECYCLED WATER NOTES FOR NON-RESIDENTIAL SITES

1. The installation of the recycled water system shall be accomplished under the approval, inspection, and to the satisfaction of the El Dorado Irrigation District (EID).
2. Contractor shall schedule a pre-construction conference with EID at (530) 295-6873 two (2) working days in advance of starting work. Construction shall begin no later than five (5) days after the pre-construction conference.
3. EID shall be notified two (2) days prior to the start of construction at (530) 295-6873 and each workday thereafter until completion of the project.
4. The property owner shall be responsible for providing access to and cooperation with EID's inspector to perform all testing and inspections.
5. Connections to the existing recycled water facilities shall be done by a licensed contractor in accordance with the EID's tie-in procedures.
6. There shall be no direct connections between the potable and recycled water systems.
7. Recycled water shall not be used for any purpose other than as approved in the User Reclamation Plan.
8. Hose bibs are prohibited on the recycled water system.
9. Water used in hose bibs shall be potable water and all hose bibs shall be attached to the building.
10. The potable water system shall be protected by an approved backflow prevention assembly. No backflow prevention assembly is required on the recycled water service.
11. All potable water lines, including fill lines for water features, shall be connected to the potable water system using copper pipe.
12. A minimum of ten (10) feet horizontal separation must be maintained at all times between the constant pressure recycled and potable water lines. A minimum of one (1) foot vertical separation must be maintained at all times between the recycled and potable water lines with the recycled waterline below the potable.
13. Blue warning tape shall be placed over pipe in the trench of all pipe carrying potable water.
14. Purple warning tape shall be placed over the in the trench of all pipe carrying recycled water.
15. Recycled water piping shall be purple and identified as recycled water pipes by continuous marking on both sides. The markings shall include the following: "WARNING RECYCLED WATER - DO NOT DRINK", nominal pipe size, pressure rating, and ASTM designations.
16. All recycled water sprinkler control valves, isolation valves, quick couplers, regulators, ARVs, and other devices shall be tagged. Identification shall be weatherproof purple plastic, 3-inches by 4-inches with the words "WARNING RECYCLED WATER - DO NOT DRINK". Imprinting shall be permanent and black in color. Use tags manufactured by T. Christy Enterprises or approved equal.
17. All areas where recycled water is used shall be posted with signs. Each sign shall state "RECYCLED WATER - DO NOT DRINK" and display the international "Do Not Drink" symbol.
18. All spray heads shall be identified with weatherproof purple plastic rings or equivalent identification and adjusted to eliminate overspray onto adjacent hardscapes.
19. Prior to occupancy, EID must perform a cross-connection test and final irrigation inspection. The contractor shall arrange with EID for a final irrigation inspection. EID shall be notified two (2) working days in advance of the desired inspection date at (530) 295-6873. Modifications to the irrigation system may be required.
20. Use of recycled water at this site is subject to requirements of a User Reclamation Plan approved by EID.
21. Failure to comply with any of the EID's Standards and Regulations may result in termination of recycled and/or potable water service.

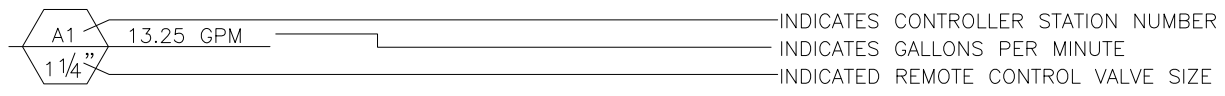
<i>EL DORADO IRRIGATION DISTRICT</i>					
<i>ON-SITE RECYCLED WATER NOTES FOR NON-RESIDENTIAL SITES</i>					
DRAWN BY A.URTEAGA	SCALE NONE	REVISION	DATE	BY	EID STANDARD DRAWING NO. <b>OSR1A</b>
APPROVED B. MUELLER	DATE 09/09				

H:\ENGINEERING EFFORT\TASK-STANDARD DETAILS\RECYCLED WATER\OSR1A - ON SITE RW NOTES.DWG

20091023.090542

# IRRIGATION LEGEND

SYMBOL	ITEM	DESCRIPTION
	LAWN POP-UP SPRAY	4" POP-UP, 8' RADIUS
	LAWN POP-UP SPRAY	4" POP-UP, 12' RADIUS
	SHRUB POP-UP SPRAY	12" POP-UP, 8' RADIUS
	REMOTE CONTROL VALVE	RAINBIRD DVF SERIES ELECTRIC CONTROL VALVE WITH RECYCLED TAGS.
	PRESSURE REGULATING VALVE	WILKINS 70 SERIES, 3/4" SIZE
	CONTROLLER	EXTERIOR MOUNT WITH RECYCLED LABEL.
	POTABLE WATER HOSE BIB	
	VALVE	
	RECYCLED WATER MAINLINE	SCH. 40 PURPLE PVC PIPE, SIZE PER PLAN
	POTABLE WATER MAINLINE	SCH 40 WHITE PVC WITH 3" CAUTION TAPE
	RECYCLED WATER LATERAL	CLASS 200 PURPLE PVC PIPE, SIZE PER PLAN
	RECYCLED WATER SLEEVING	2" SCHEDULE 40 PURPLE PVC PIPE
	POTABLE COPPER WATER PIPE	



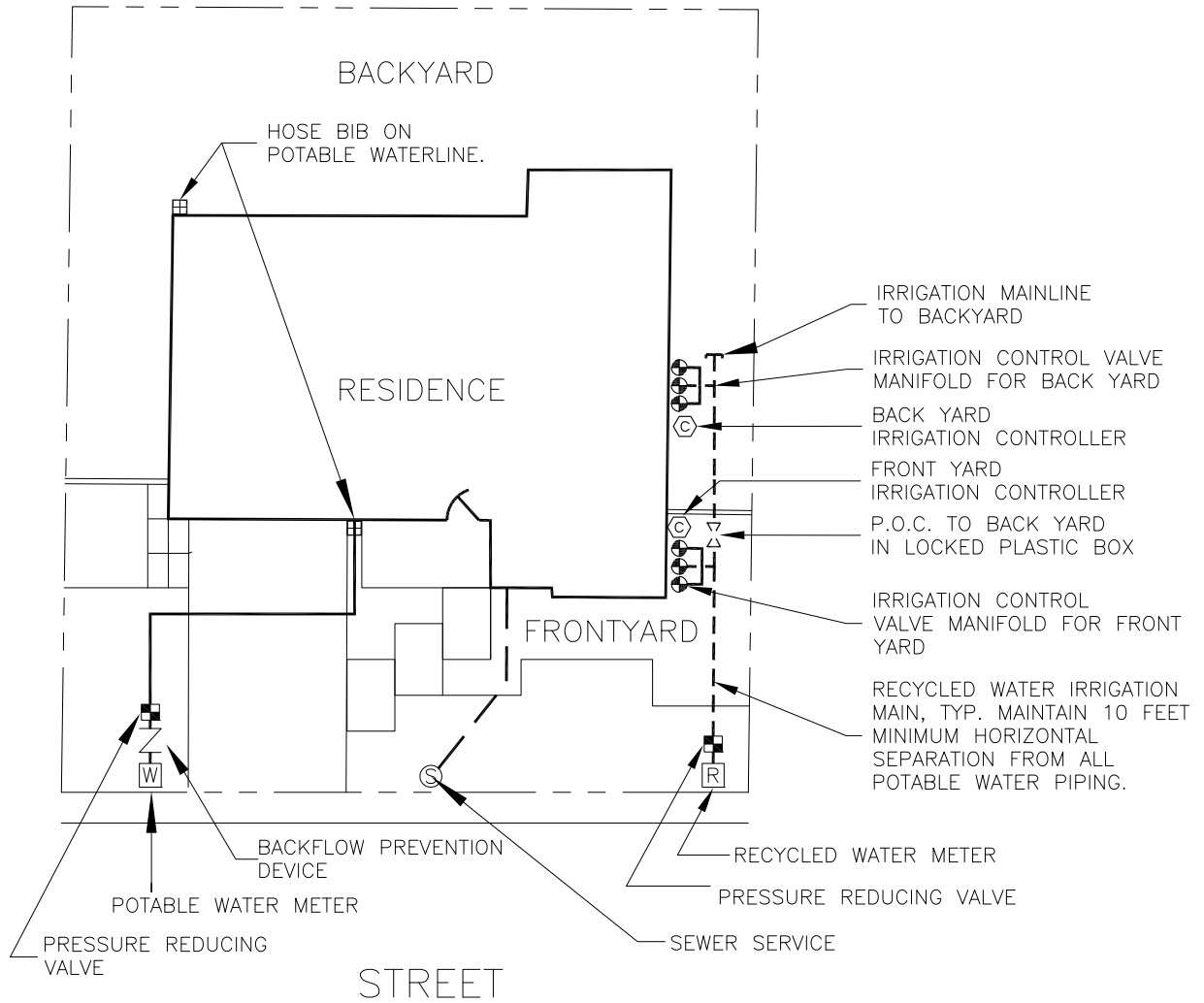
NOTES

1. INSTALLATION OF RECYCLED WATER IRRIGATION SYSTEM SHALL BE IN CONFORMANCE WITH EID ON-SITE DESIGN AND CONSTRUCTION STANDARDS.

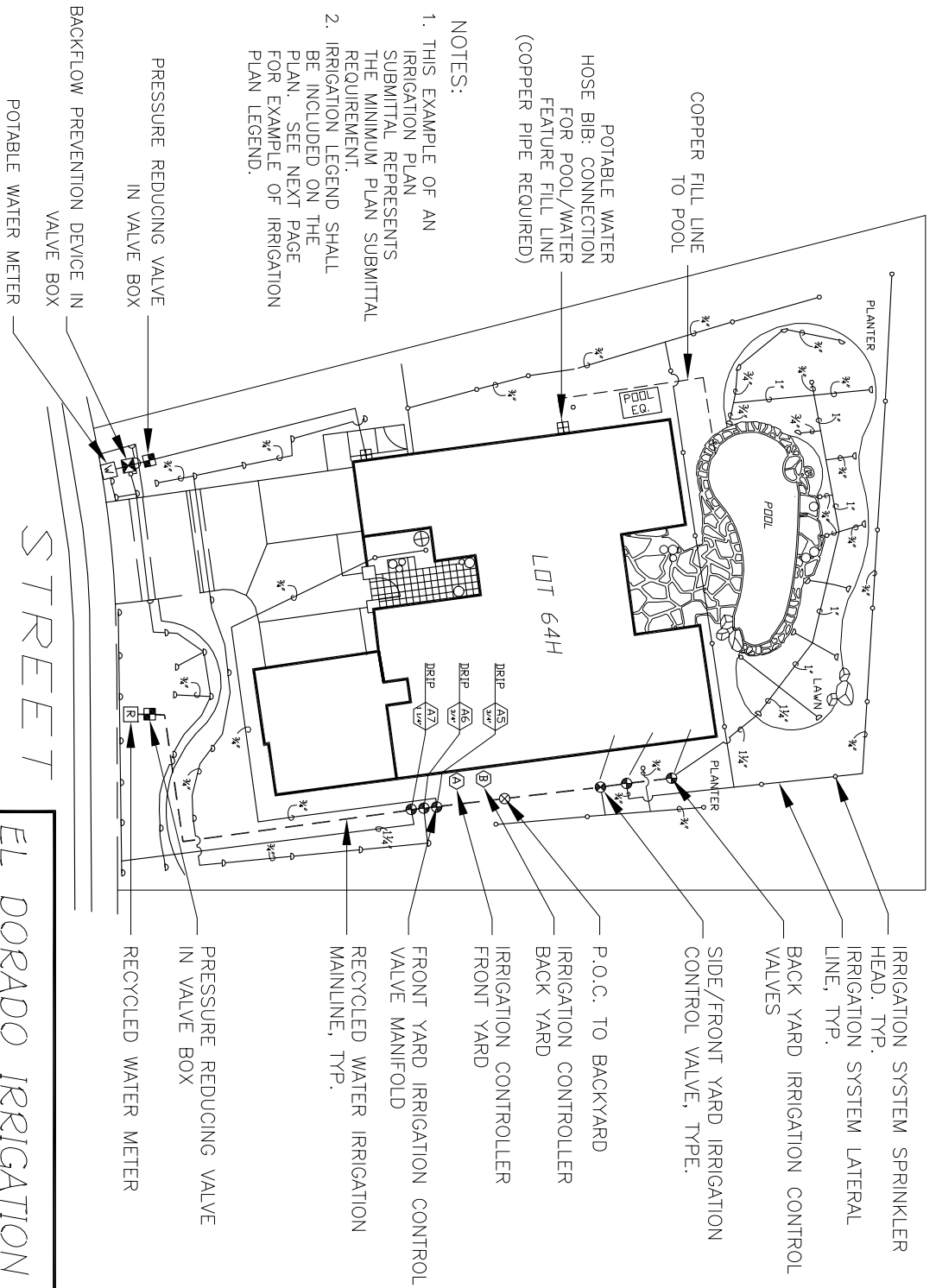
<i>EL DORADO IRRIGATION DISTRICT</i>				
<i>IRRIGATION LEGEND EXAMPLE SUBMITTAL PLAN/RECYCLED WATER</i>				
DRAWN BY A.URTEAGA	SCALE NONE	REVISION	DATE	BY
APPROVED B. MUELLER	DATE 09/09			
				EID STANDARD DRAWING NO. <i>OSR2</i>

H:\ENGINEERING EFFORT\TASK-STANDARD DETAILS\RECYCLED WATER\OSR2 - IRRIGATION LEGEND.DWG

20091102.013541



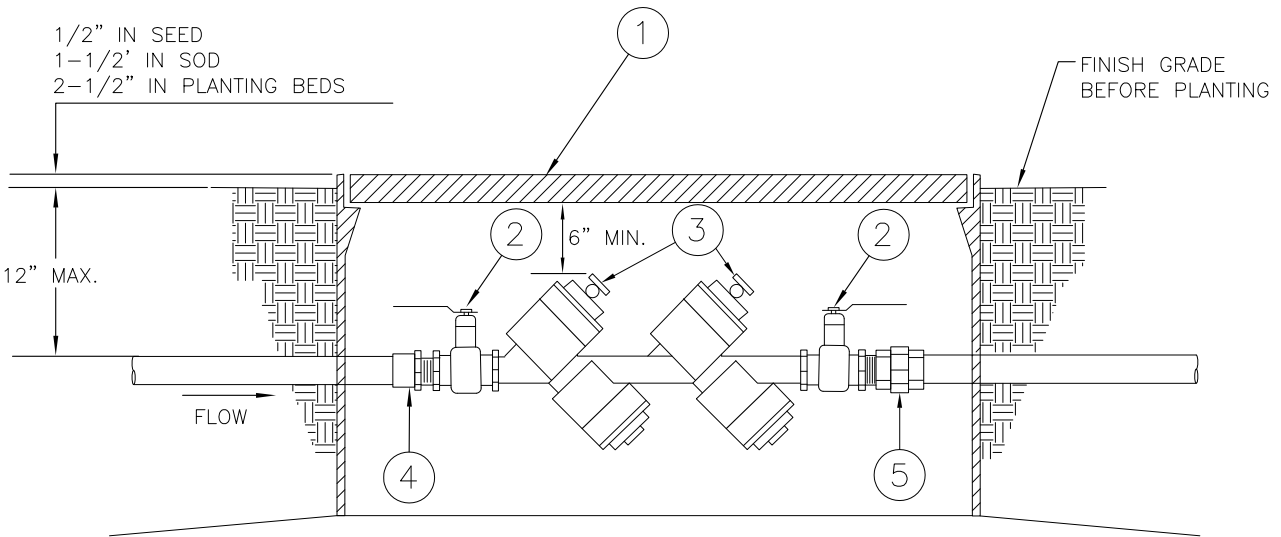
<i>EL DORADO IRRIGATION DISTRICT</i>					
<i>RESIDENTIAL DUAL PLUMBED SERVICE</i>					
DRAWN BY A. URTEAGA	SCALE NONE	REVISION	DATE	BY	EID STANDARD DRAWING NO. <i>OSR3</i>
APPROVED B. MUELLER	DATE 09/09				



- NOTES:
1. THIS EXAMPLE OF AN IRRIGATION PLAN SUBMITTAL REPRESENTS THE MINIMUM PLAN SUBMITTAL REQUIREMENT.
  2. IRRIGATION LEGEND SHALL BE INCLUDED ON THE PLAN. SEE NEXT PAGE FOR EXAMPLE OF IRRIGATION PLAN LEGEND.

EL DORADO IRRIGATION DISTRICT  
TYPICAL HOUSE IRRIGATION LAYOUT

DRAWN BY A. URTEAGA	SCALE NONE	REVISION	DATE	BY	EID STANDARD DRAWING NO. OSR4
APPROVED B. MUELLER	DATE 09/09				



ITEM #	DESCRIPTION
①	METER BOX 12"x20" CONCRETE BOX & STEEL LID
②	BALL VALVE, SUPPLIED WITH BACKFLOW PREVENTER BY MANUFACTURER.
③	DOUBLE CHECK BACKFLOW PREVENTER
④	BRASS ADAPTOR, TYP.
⑤	BRASS UNION DOWNSTREAM OF VALVE

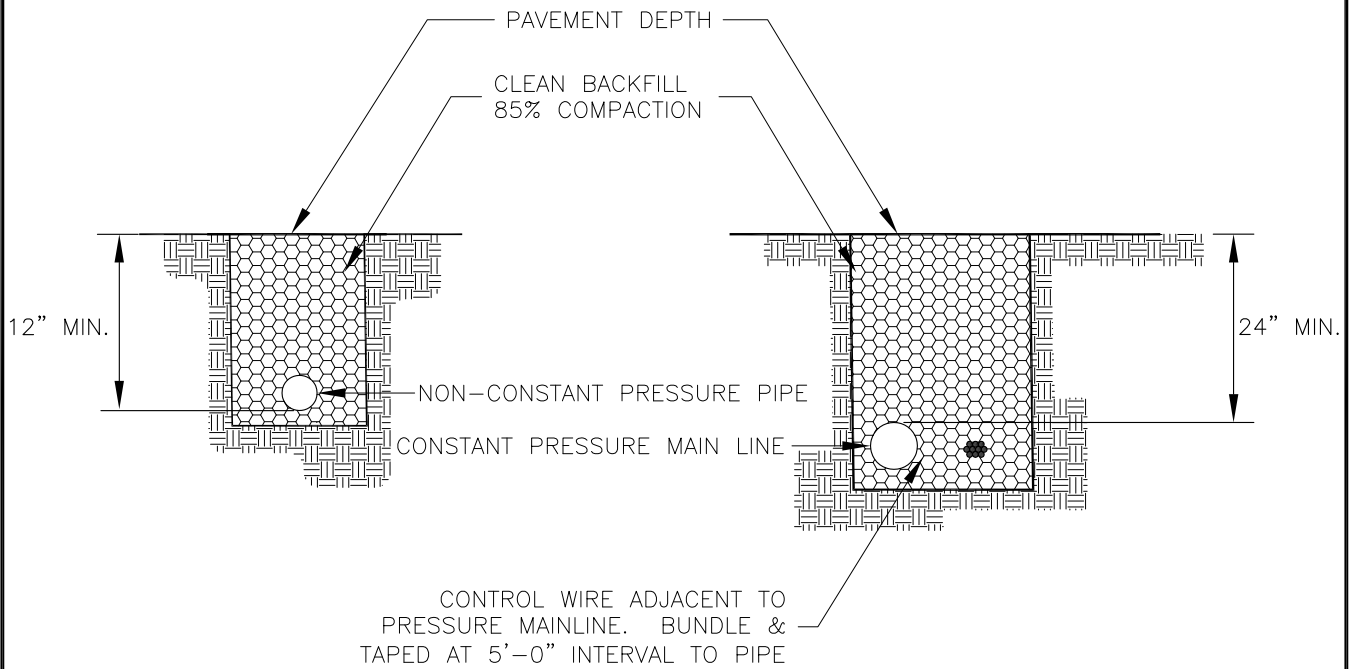
CONSTRUCTION NOTES

1. PLACE VALVE BOX AT RIGHT ANGLES TO STRUCTURES OR HARDSCAPING
2. INSTALL VALVE BOX SO THAT TOP OF VALVE BOX IS FLUSH WITH ADJACENT HARDSCAPING.
3. GATE VALVE AND FITTINGS SHALL BE LINE SIZE UNLESS NOTED OTHERWISE.

EL DORADO IRRIGATION DISTRICT

POTABLE WATER DOUBLE CHECK VALVE  
FOR DUAL PLUMBED HOMES

DRAWN BY A.URTEAGA	SCALE NONE	REVISION	DATE	BY	EID STANDARD DRAWING NO. <b>OSR5</b>
APPROVED B. MUELLER	DATE 09/09				



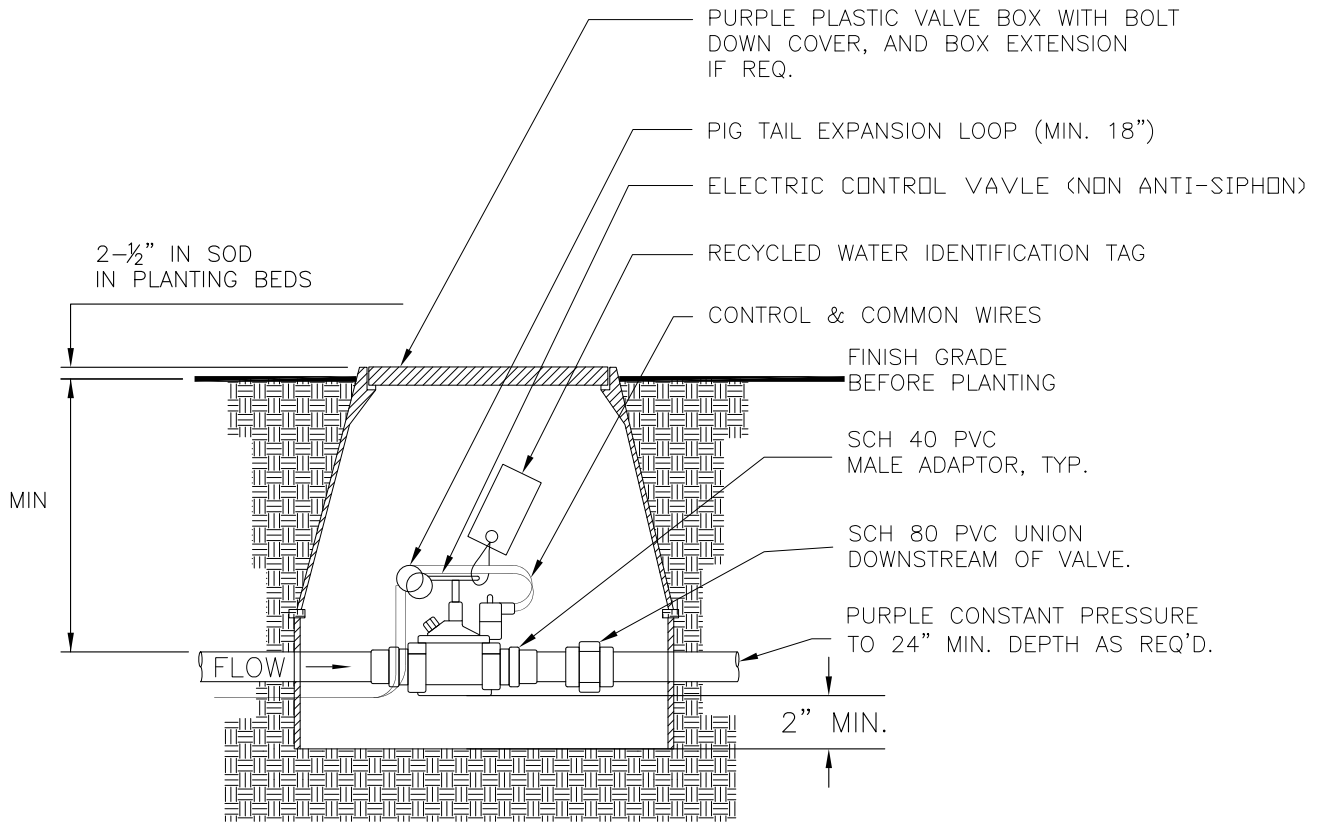
NOTES

1. SLEEVES UNDER CONCRETE ARE RECOMMENDED. USE SCH 40 PURPLE PVC FOR SLEEVES AND EXTEND SLEEVES 12" BEYOND EDGE OF PAVING AT BOTH ENDS.

EL DORADO IRRIGATION DISTRICT

ONSITE IRRIGATION PIPE TRENCHING  
FOR RECYCLED WATER SYSTEM

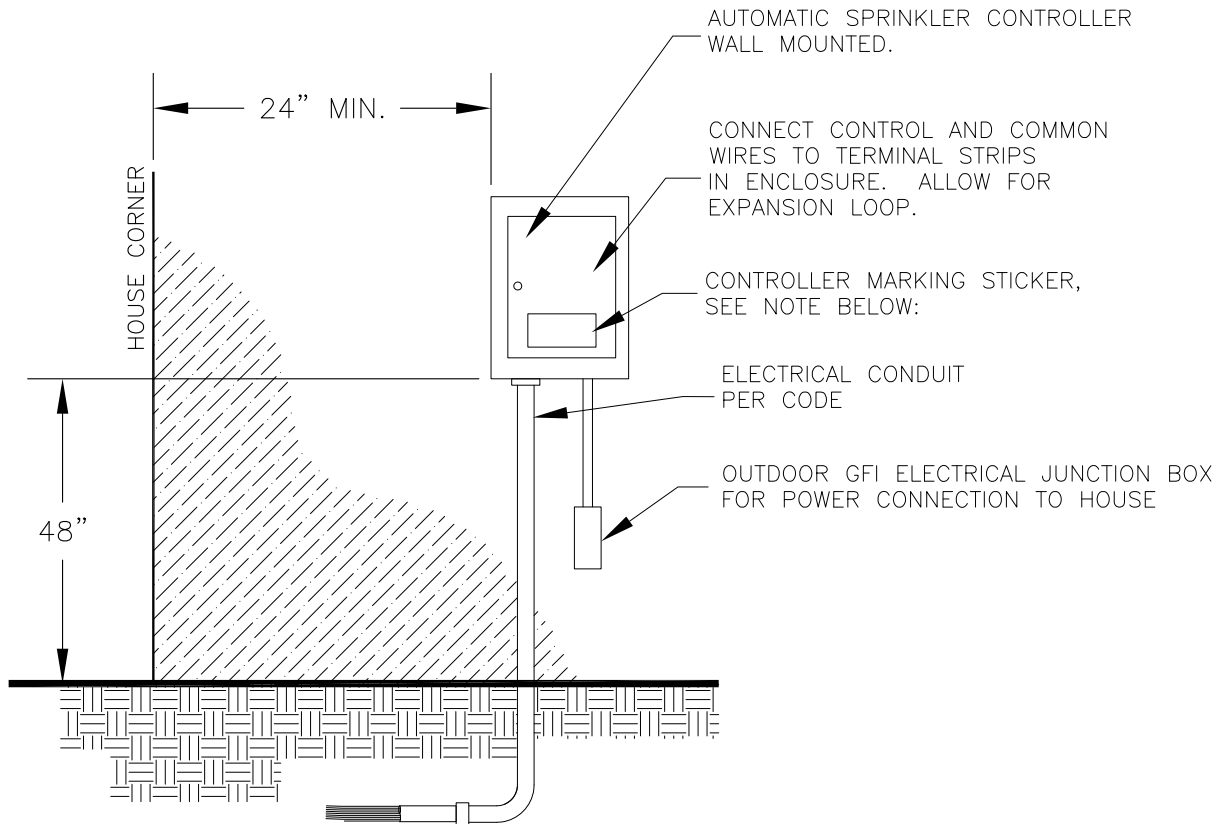
DRAWN BY A.URTEAGA	SCALE NONE	REVISION	DATE	BY	EID STANDARD DRAWING NO. <b>OSR6</b>
APPROVED B. MUELLER	DATE 09/09				



NOTES

1. ATTACH DOUBLE SIDED IDENTIFICATION TAGS LABELED IN ENGLISH AND SPANISH: "WARNING - RECYCLED WATER DO NOT DRINK".

<i>EL DORADO IRRIGATION DISTRICT</i>					
<i>ONSITE IRRIGATION BURIED ELECTRIC REMOTE CONTROL VALVE</i>					
DRAWN BY A. URTEAGA	SCALE NONE	REVISION	DATE	BY	EID STANDARD DRAWING NO. <i>OSR7</i>
APPROVED B. MUELLER	DATE 09/09				



NOTES:

1. CONTROL WIRING (AWG. UF #14). SECURE TO TERMINAL STRIP PROVIDED IN ENCLOSURE.
2. COMMON WIRE TO BE WHITE & CONTROL WIRE TO BE RED. BUNDLE AND TAPE WIRING AT INTERVALS OF 10'-0" O.C.
3. NO SPLICES TO BE MADE BETWEEN CONTROLLER AND VALVE.
4. INSTALL CONTROLLER MARKING STICKER:  
"ATTENTION - CONTROLLER UNIT FOR RECYCLED WATER"  
ATTACH STICKER INSIDE CONTROLLER CABINET DOOR.

<i>EL DORADO IRRIGATION DISTRICT</i>					
<i>ONSITE IRRIGATION AUTOMATIC CONTROLLER - WALL MOUNT</i>					
DRAWN BY A.URTEAGA	SCALE NONE	REVISION	DATE	BY	EID STANDARD DRAWING NO. <i>OSR8</i>
APPROVED B. MUELLER	DATE 09/09				