

Timberline Lift Station Upgrades Project

July 27, 2011



Background

- Constructed in 1989 for local residential gravity flow
- Recent improvements have been made to address previous issues
- Components of the lift station have reached the end of their useful life
- Due to topography, not feasible to remove the lift station
- Project is currently in design

Key Project Elements

- Replace all electrical components and pumps
- Replace the back-up generator
- Install odor control
- Rehabilitate the existing wet well
- Install new onsite manhole and buried valves – limited excavation work

Timberline Lift Station

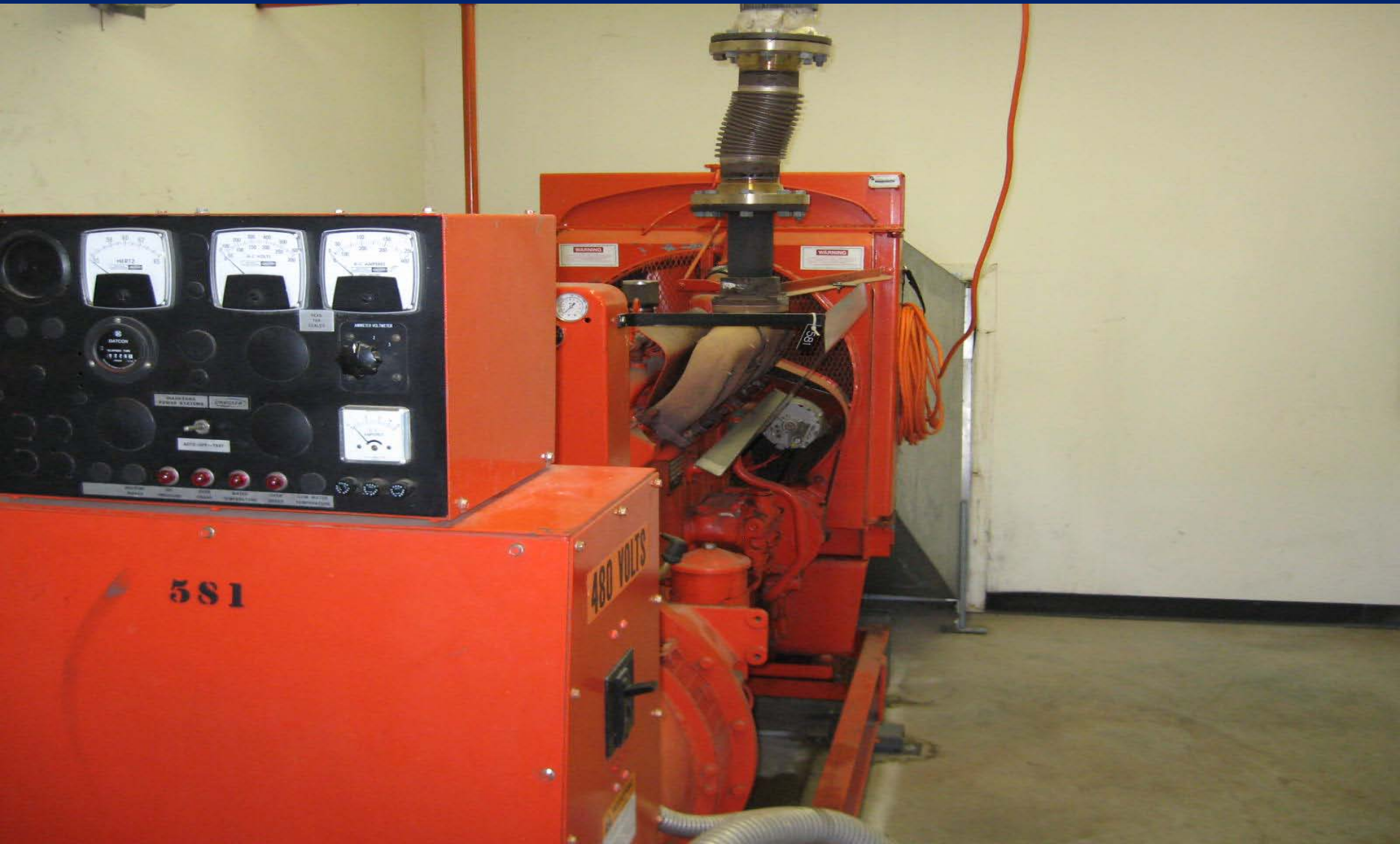


Timberline Lift Station



TIMBERLINE
LIFT STATION
IF THIS LIGHT IS SET OFF
FLASHING PLEASE CALL
(530)622-4513
© 2008 WASTE MANAGEMENT SERVICES

Timberline Lift Station



Project Schedule

- Receive bids in Fall 2011
- Construction period from late-2011 to mid-2012
- Most work conducted Monday - Friday, 7 a.m. to 5 p.m.
 - Resident concerns/feedback
 - Tie-in of new piping may have to be done at night
- No impacts to sewer service during construction

Benefits to Community

- New modern equipment - increased reliability
- Installation of new active odor control
- All work conducted “on site” – minimal impacts

EID Project Manager:

Mike Brink, PE (530) 642-4054